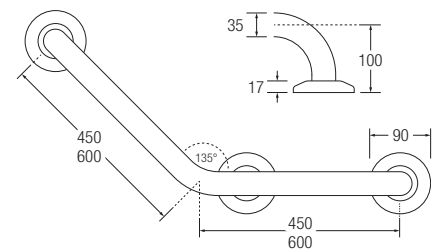


Mild Steel and Stainless Steel 3 Flange Cranked Grab Rails



35mm

- Creates a more natural angle for the hand, enabling easier movement.
- Additional flange for added strength.
- Stainless Steel for use in wet or damp areas. Mild Steel for use in dry areas.
- Available in polyester coated, mirror polished and sateen polished finishes. Please specify the RAL colour you require when ordering colours.
- Fixing holes to fit size 8 screws. (Fixings not supplied)



35mm 3 Flange Cranked Grab Rail - Left Hand

White
 Blue RAL 5011
 RAL Colour
 Mirror Polish
 Sateen Polish

35mm	MS	450mm x 450mm	42720C	42725C	42726C	NA	NA
35mm	MS	600mm x 600mm	42820C	42825C	42826C	NA	NA
35mm	SS	450mm x 450mm	42760C	42765C	42766C	42770C	42775C
35mm	SS	600mm x 600mm	42860C	42865C	42866C	42870C	42875C



Ribbed Grip

3 Flange Cranked Grab Rails can be manufactured with a ribbed grip. **Please add an 'R' to the end of the product code.** Please note ribbed grips are not recommended for wet environments.

35mm 3 Flange Cranked Grab Rail - Right Hand

White
 Blue RAL 5011
 RAL Colour
 Mirror Polish
 Sateen Polish

35mm	MS	450mm x 450mm	42730C	42735C	42736C	NA	NA
35mm	MS	600mm x 600mm	42830C	42835C	42836C	NA	NA
35mm	SS	450mm x 450mm	42780C	42785C	42786C	42790C	42795C
35mm	SS	600mm x 600mm	42880C	42885C	42886C	42890C	42895C