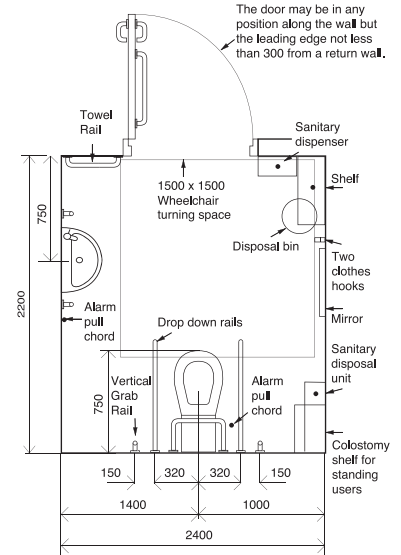


Document M Pack

Unisex Accessible Peninsular WC Scenario



Doc M Pack
Peninsular WC Scenario



Drawing is for guidance only - please revert to relevant building regulations

Unisex Accessible Peninsular WC Scenario

- White
- Blue - RAL 5011
- RAL Colour
- Mirror Polish
- Sateen Polish

with 890mm Hinged Support Rail

		Aluminium Backplate			Stainless Steel Backplate	
MS	4 Rail Pack	83200	83205	83210	NA	NA
SS	4 Rail Pack	83220	83225	83230	83241	83250

- Bespoke Doc M Packs can be made to your specification using codes listed within this catalogue.
- Backrest cushions are not supplied as part of the pack and must be ordered separately. Turn to page 64.
- Fixing holes to fit size 8 screws and M8 bolts. (Fixings not supplied)

Pack Contents

Peninsular Scenario 4 Rail Pack includes:

- 2x 890mm Double Arms
- 1x Backrest 240 x 400 x 240mm
- 4x Grab Rails 600mm x 35mm

+ Toilet Roll Holder

Double Arm Hinged Rails can be manufactured with an integrated toilet roll holder. Must be requested when ordering.

+ Extras

A selection of recommended accessories to complement the Document M Packs.

Towel Rails	Turn to page 74
Clothes Hooks	Turn to page 79
Toilet Roll Holders	Turn to page 78